

Verona Fireplace

Gather 'round the fire day or night! Complement your patio with the sleek look of the Verona Fireplace. Add warmth to your backyard in any season! Contains everything you need to construct this stunning fireplace.

nicolock[®]
PAVING STONES • RETAINING WALLS • OUTDOOR LIVING
 **paver-shield**[™]

Fire Pits | Fireplaces



Verona Fireplace

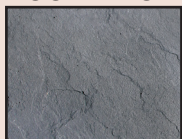
	LENGTH	WIDTH	HEIGHT	LBS/PALLET
A	91"	56"	97"	16,828



INCLUDES:

- 6 Pallets of Verona Wall
- Cast Concrete Fireplace opening surround
- Wood burning fireplace inset with single piece, brushed stainless face, stainless mesh screens with hidden pockets
- Round top cap with mesh screen
- Realistic textured brick liner in natural white, EZ access damper & gas log ready feature
- 4 concrete lintels
- Double wall flue pipe
- Pre-cast concrete medallion

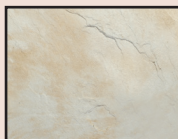
ACCENT OPTIONS:



BLUESTONE



BROWN



GIRONDE*



ADOBE BLEND



BLUESTONE*



CHARCOAL



CHESAPEAKE BLEND*



CRAB ORCHARD BLEND



GOLDEN BROWN BLEND



GRANITE CITY BLEND



GRAPHITE PEARL BLEND*



OCEANIC BLUE*



OYSTER BLEND



SOUTH BAY BLEND

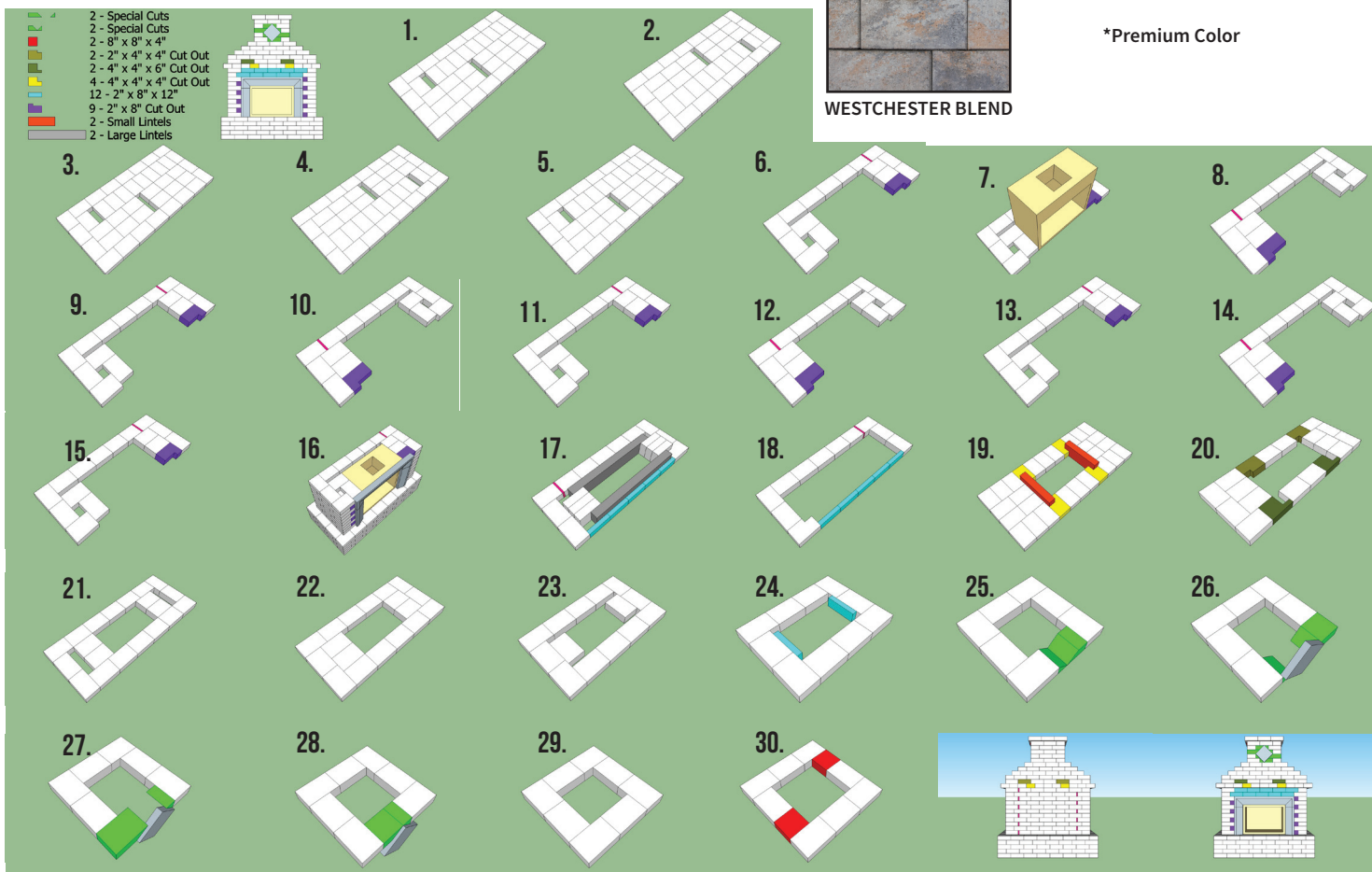


TRAVERTINA*



WESTCHESTER BLEND

*Premium Color



for larger install images, please email info@nicolock.com



Corporate HQ: 612 Muncy Avenue | Lindenhurst | NY | 11757 | 631.669.0700 | nicolock.com

