

KODAH WALL

Kodah Wall is a one-of-a kind large scale retaining wall system. Its modern, linear proportions combined with its rough, quarried stone texture make it perfect for a variety of applications. The Kodah Wall also makes it easier than ever to provide you with the big block look without the over the top installation costs.



Wall Systems



Kodah Wall | Color: York Brown



KODAH WALL

HEIGHT	WIDTH	DEPTH	SF / PALLET	PCS / PALLET	LBS / PALLET
6"	42"	10½"	21	6	2,400
6"	30"	10½"		3	
6"	21"	10½"		6	
6"	12"	10½"		3	
6"	21"	10½"	31½	24 Corner Pieces	2,400



6" x 42" x 10½"



6" x 30" x 10½"



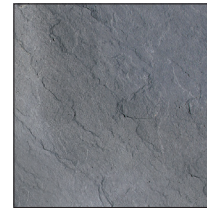
6" x 21" x 10½"



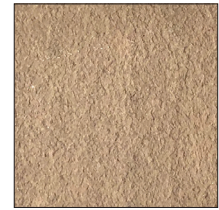
6" x 12" x 10½"



Corner: 6" x 21" x 10½"
SOLD SEPARATELY



Bluestone



Mocha



York Brown



Kodah Pier | Color: Gironde (special order)

Corner blocks are used to build the pier. Multiple textures provide a random look for your finished project. Cap provides the finishing touch as well as additional lighting possibilities.

Builds Per Pallet:

One: 32" x 32" x 36" pier

HEIGHT	WIDTH	DEPTH	SF / PALLET	PCS / PALLET	LBS / PALLET
6"	21"	10½"	31.5	24	2,400

Cap: 3" x 34" x 34"
(sold separately)



Maximum exposed height for gravity walls is 36" under ideal conditions. Soil type, crest slopes and surcharges will decrease max exposed height for gravity walls. Consult a professional engineer to determine site and specific colors

NOTE: All walls over 2' in height or as required by local code should be designed by a licensed professional engineer. All measurements are nominal. Variance in square footage or linear footage coverage can be up to 5% depending on joint width. The possible occurrence of efflorescence does not affect the structural integrity of the product. Efflorescence is a normal occurrence in concrete products and will dissipate with normal weathering. The use of concrete as a base or setting bed may increase the possibility of efflorescence.



Corporate HQ: 612 Muncy Avenue | Lindenhurst | NY | 11757 | 631.669.0700 | nicolock.com

